



Tools for Safer Chemicals: ChemSec's SINimilarity & Textile Guide

Jerker Ligthart

Senior Chemicals Advisor



- This webinar will be recorded & posted on the BizNGO website (www.bizngo.org)
- The presentation will last about 40-45 minutes
- The remaining time will be for Questions & Answers
 - Please type your questions in the question box



chemsec

INTERNATIONAL CHEMICAL SECRETARIAT

How to move chemicals
management into the 21st
century – for free!



chemsec

INTERNATIONAL CHEMICAL SECRETARIAT



TEXTILE GUIDE

<http://textileguide.chemsec.org/>



SINIMILARITY

<http://sinimilarity.chemsec.org/>



SIN PRODUCERS

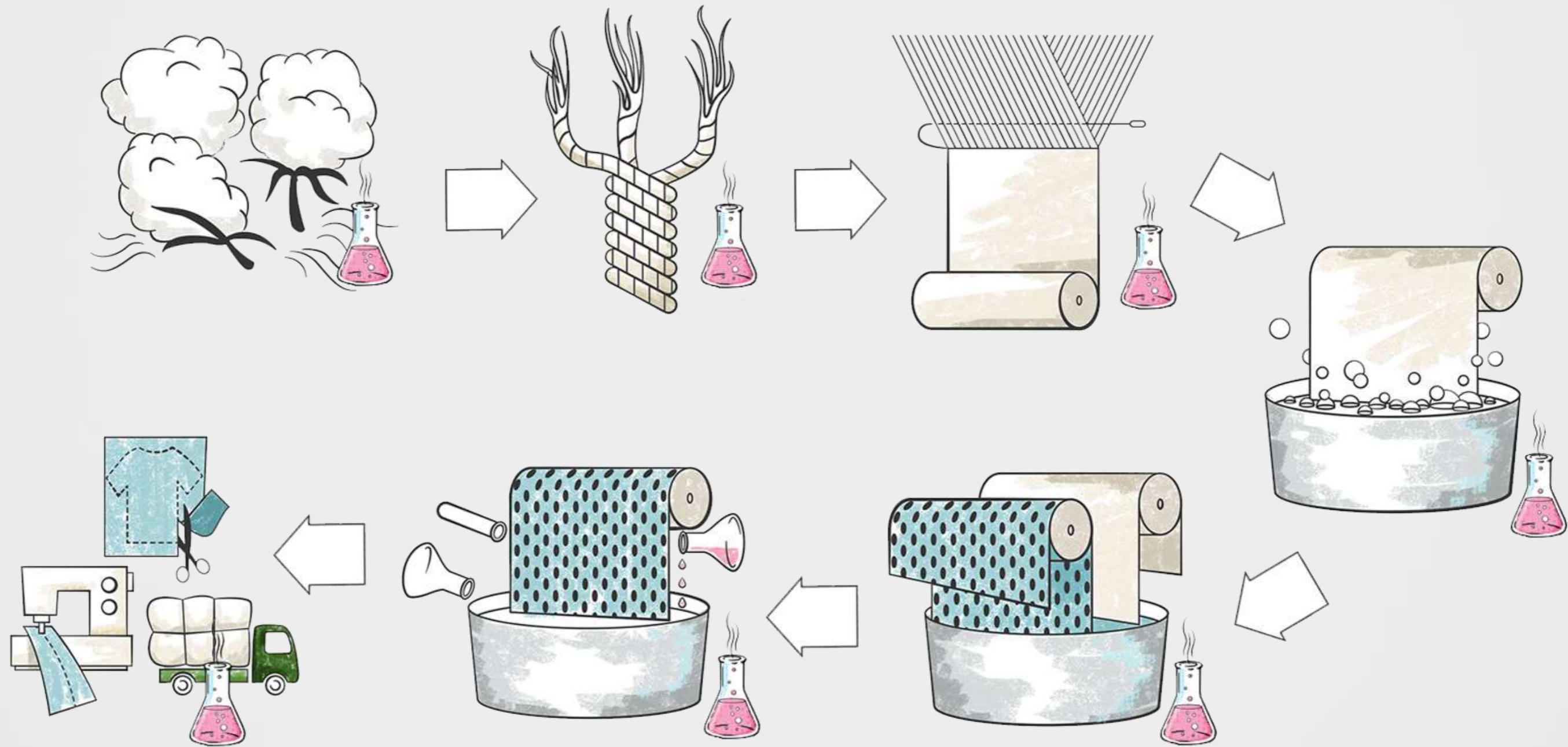
<http://sinproducers.chemsec.org/>



SIN LIST

<http://sinlist.chemsec.org/>

TEXTILE GUIDE



Current situation

- Lack of supply chain information
- Industry top dogs shifting from rsl to mrsi
- Industry is advanced in many areas – chemicals management not one of them
- Others are scrutinizing industry with the help of technology

Textileguide.chemsec.org

chemsec

TEXTILE GUIDE



Textile Guide

Tells you

Where chemicals are used
Which ones that are problematic
Ideas what to do about it

Going backstage

21
Rsl:s

Company & Textile Sector Lists

AAFA
AFIRM
Bluesign
EU Ecolabel
Good Environmental Choice
GOTS,
H&M
Nordic Ecolabel
Oeko-Tex
Puma
VF Group
ZDHC

US Lists

US California Candidate List
US Prop 65
US EPA TRI

EU Lists

EU Candidate List
EU List of Restrictions
EU WFD

International Lists

POP, PIC & Rotterdam conventions

NGO Lists

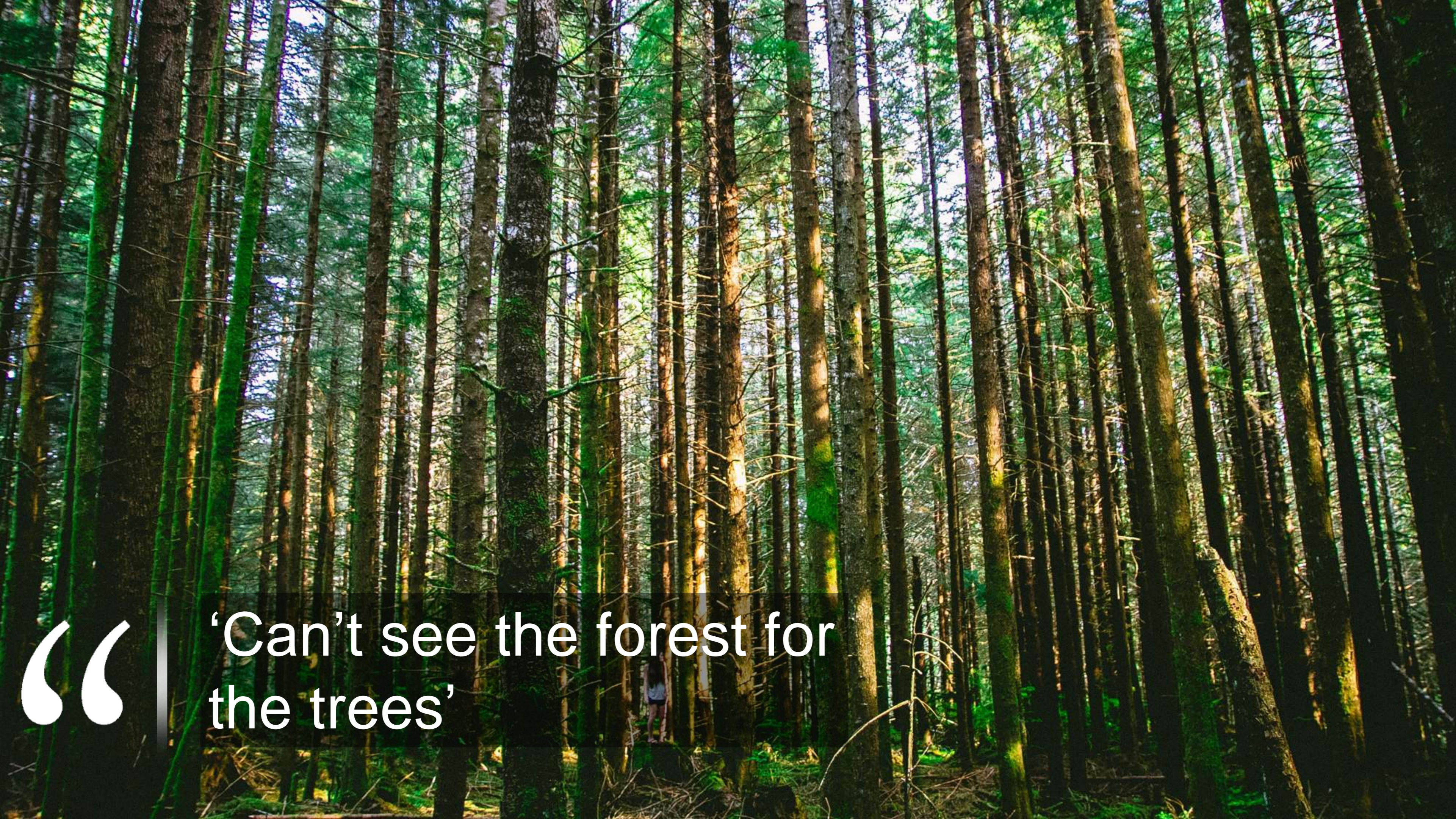
SIN List
Trade Union List

6 500 hazardous
substances

100 000
Chemicals in the
reference database

Makes sure you get a
search result even if it's not
hazardous.

1 200 000
data values



“

‘Can’t see the forest for the trees’

Here's what you can use instead



Safe Alternative
Avoid problematic
properties



Well documented
Fulfills company rsl
& mrsi



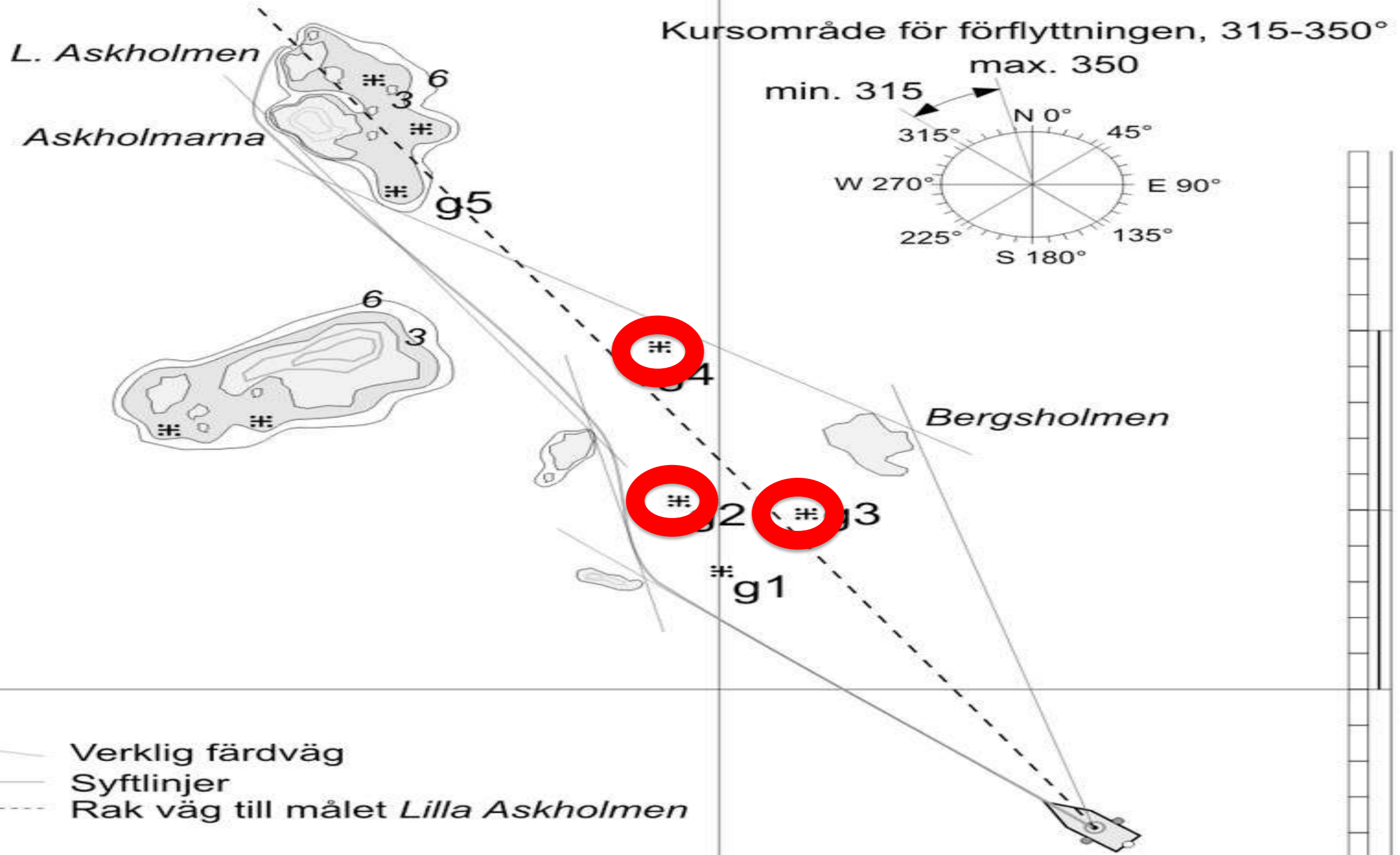
High standard
Eco-label certified



Chemical Supplier
Who sells this product?

SINIMILARITY





SINimilarity

-Or, how to navigate unknown chemical waters

- The SINimilarity tool is based on structural resemblance
 - Overall structure
 - Toxicophores
- Can identify substances similar to SIN List substances from a dataset of approximately 500'000 substances
 - Search by CAS#, EC#, Name or Structure (SMILES)
- The aim is to **Empower downstream users**
 - Help them avoid regrettable substitution
- Easy to use web-based tool
- Raising a warning flag




SEARCH THE SINIMILARITY TOOL

And we can identify if your chemicals are linked to any in the SIN List by group, structure or both.

Showing 1 of 1 results for "**17696-37-6**" in the SINimilarity tool.

No results found on the [SIN List](#).

CAS Number	Name	SIN Groups	Matches in SIN List
17696-37-6	4-tert-butyl-2,5-xylenol	Alkylphenols	3 matches 
732-26-3	2,4,6-Tri-tert-butylphenol	Alkylphenols	OPEN FACT SHEET
128-37-0	ButylatedHydroxytoluene	Alkylphenols	OPEN FACT SHEET
98-54-4	4-Tert-Butylphenol	Alkylphenols	OPEN FACT SHEET

Chemical knowledge vs. expertise



Summary

 chemsec
TEXTILE GUIDE

- Offers a modern approach
- Standardized chemical information
- A one-stop shop for chemicals management

 chemsec
SINIMILARITY

- Empowers also non-chemists
- Helps prevent regrettable substitution
- Flag for potential hazards



Thank You For Listening

I'll be answering questions soon

And don't forget to check out our tools at:

- <http://textileguide.chemsec.org/>
- <http://sinimilarity.chemsec.org/>