

# The Chemical Footprint Project

Sally Edwards, Senior Research Associate  
Lowell Center for Sustainable Production  
University of Massachusetts Lowell

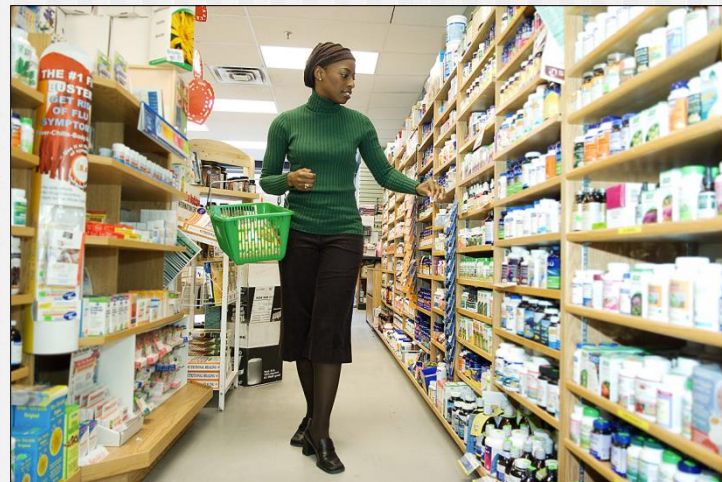
**Presentation to BizNGO – December 8, 2015**



- What is CFP?
- Why is CFP needed?
- CFP's business value
- 2015/16 progress to date and timeline
- Our vision for CFP

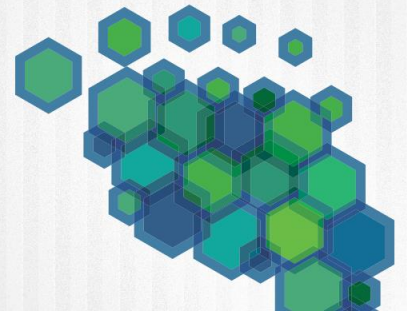






*You can't manage what you don't measure*







# Founders



# Steering Committee



**KAISER PERMANENTE**



**Dignity Health**



**Investor Environmental Health Network**  
HEALTHY PEOPLE...HEALTHY BUSINESS

**EDF**  
ENVIRONMENTAL DEFENSE FUND  
Finding the ways that work



# What is the Value of the CFP?

## Retailers

- Credible 3rd party approach for driving chemicals management into the value chain

## Investors

- Provides key missing element for evaluating corporate sustainability efforts

## Brands

- Assess chemicals management and benchmark progress; opportunity for public recognition of leadership

## Purchasers

- Identify chemical management leaders in product categories

## Public

- Reduced high hazard chemicals in commerce, improves health outcomes







## CFP Assessment Tool

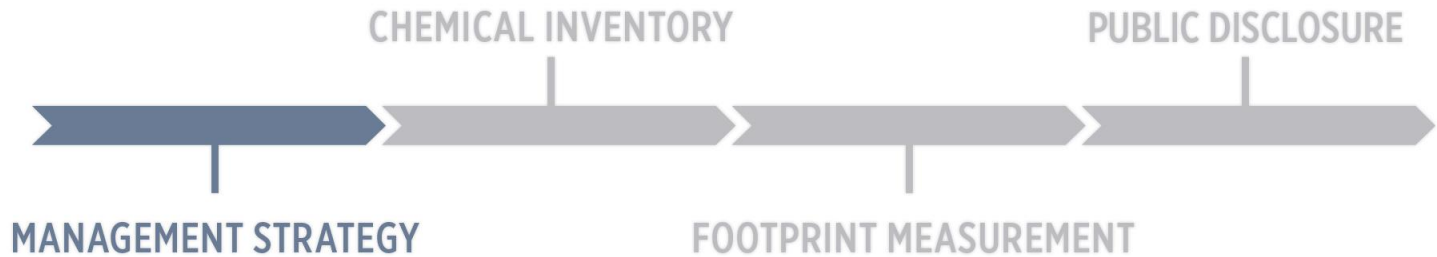


Assessment Tool:  
20 Questions - 100 pts





## CFP Assessment Tool



Policy

- Avoid chemicals of high concern?

Policy

- Specify the use of safer alternatives?

Business Strategy

- How integrated

Engagement

- Public policy initiatives

Accountability

- Accountability and incentives for employees





## CFP Assessment Tool



### Manage

- Chemicals on RSL

### Inventory

- Identify additional CoHCs

### Reporting

- Engaging suppliers

### Data Systems

- How are chemical data managed?

### Assurance

- Ensuring conformance with reporting

## CFP Assessment Tool



### Set Goals

- To reduce CoHCs | report progress

### Baseline

- Measure your baseline footprint

### Results

- Reduction in CoHCs over 1 year

### Evaluate

- How are chemical hazards assessed?

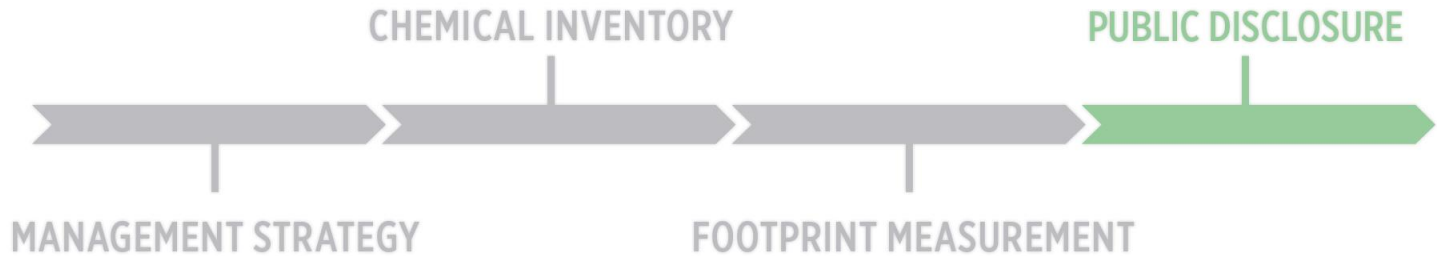
### Prefer

- Encourage use of safer alternatives





## CFP Assessment Tool



Disclose

- Chemicals in products

Disclose

- Participation in CFP

Disclose

- Responses

Verification

- Independent body





**THE CHEMICAL FOOTPRINT PROJECT**

# Guidance for Using the CFP Assessment Tool







**Chemical Footprint:** the total mass of chemicals of high concern in: products, manufacturing, supply chain, and packaging

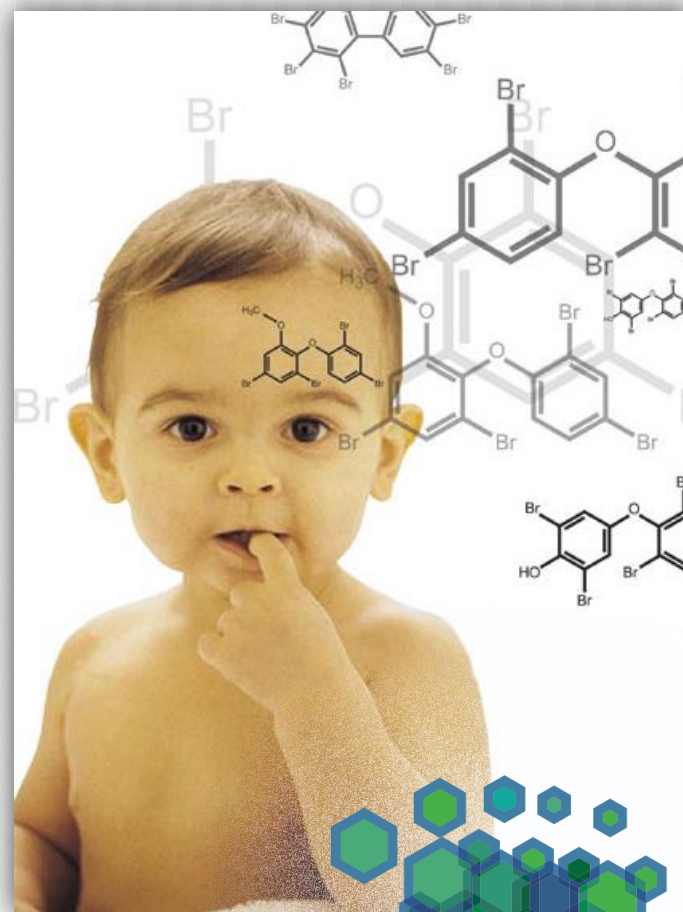




# Chemicals of High Concern (CoHCs)

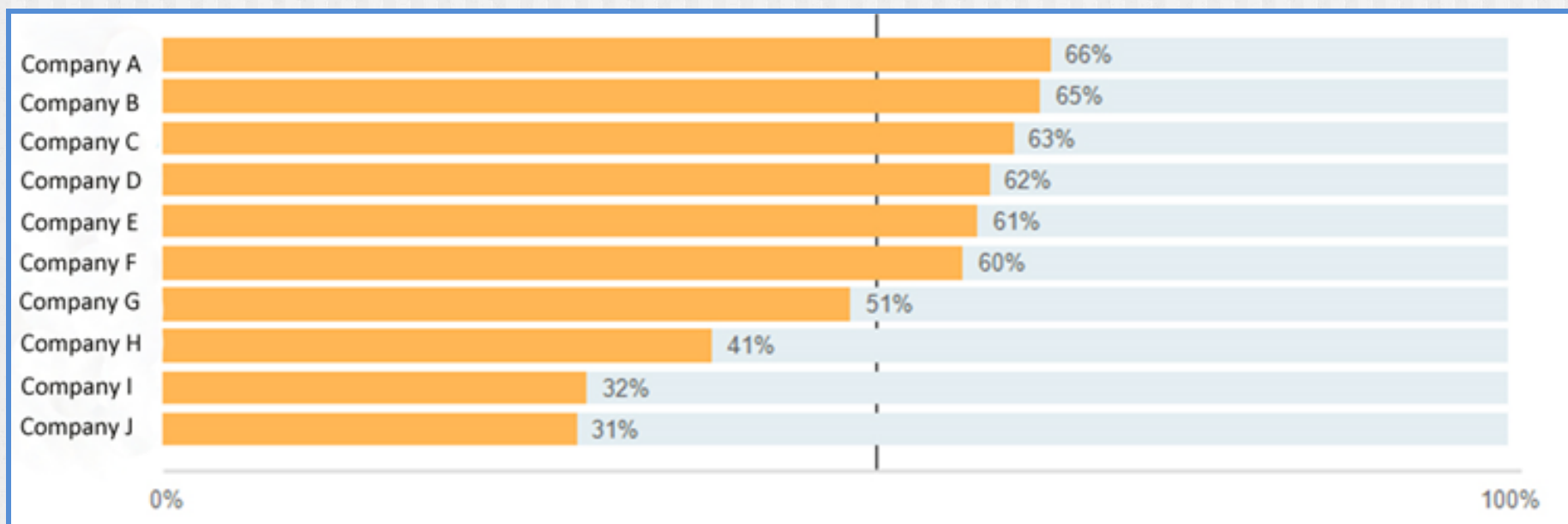
- carcinogen, mutagen, or reproductive toxicant (CMR)
- persistent, bioaccumulative and toxic substance (PBT)
- any other chemical for which there is scientific evidence of probable serious effects to human health or the environment that give rise to an equivalent level of concern
- a chemical whose breakdown products result in a CoHC that meets any of the above criteria

## California Candidate Chemical List



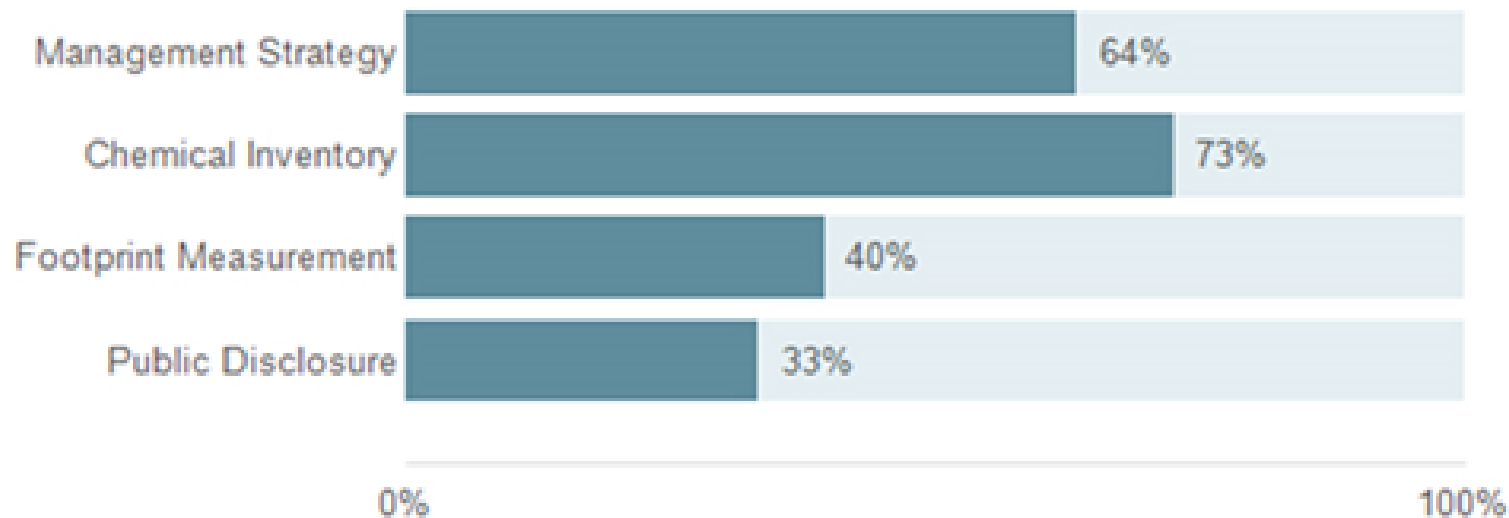
# Example: Scores by Sector

## CFP scores by company within sector



# Example: Scores by Individual Company

## Company scores by category





## 2014 Pilot: participant feedback

- Provides a **systematic approach** for evaluating chemicals management
- **Facilitates conversations** within organizations: R&D, production, supply chain management, & C-Suite
- Enables **gap analysis**: assessment identifies opportunities for improvement and information needs
- Provides motivation to **formalize chemical policies and procedures** across an organization
- **Creates a standard** for measuring performance in chemicals management



BEAUTYCOUNTER

seventh generation™



# Signatories & Responders

- Signatories are: investors, retailers, institutional purchasers & NGOs
- Signatories ask suppliers & stakeholders to complete CFP Assessment Tool
- Responders are brands, manufacturers & suppliers
- Responders complete Assessment Tool and get CFP score





# Signatories:

Investors

Retailers

Purchasers

NGOs

Adrian Dominican Sisters  
Advocate Health Care  
Anne Arundel Medical Group  
Arjuna Capital  
As You Sow Foundation  
Australian Ethical Investment  
Aviva Investors  
BNP Paribas IP  
Boston Common A  
Calvert Investment  
ChemSec  
Christopher Reyn  
Daughters of Charity, Province of St. Louise  
Dignity Health  
Dominican Sisters of Hope  
Edward-Elmhurst Healthcare  
Environmental Defense Fund  
Everence Financial  
Fairview Health Services  
First Affirmative Financial Network  
Green Century Capital Management  
Hackensack University Medical Center  
Harrington Investments  
Impax Asset Management  
Inova Health Systems  
Investor Environmental Health Network  
Investor Voice

Kaiser Permanente  
Legal & General Investment Management  
Maryknoll Sisters  
Mercy Health  
Mercy Investment Services  
Miller/Howard Investments  
Natural Investments  
Newground Social Investment

37 investors with \$2.1 trillion in assets under management

Sisters of St. Francis of Philadelphia  
Sonen Capital LLC  
St. Joseph Health  
Staples  
The Rose Foundation for Communities and the Environment  
The Sustainability Group of Loring, Wolcott and Coolidge  
Trillium Asset Management  
Trinity Health  
Ursuline Sisters of Tildonk  
Walden Asset Management  
WHEB Asset Management  
Zevin Asset Management





Premier, Inc. (Nasdaq: PINC) is a healthcare performance improvement alliance of approximately 3,600 U.S. hospitals and 120,000 other providers.

Premier's mission is simple: *To improve the health of communities.*

Premier's award-winning environmental leadership platform – **GreenHealthy®** – includes our EPP (Environmentally Preferable Purchasing) program and our internal corporate-wide Yes to Green program. Premier is committed to working with our members to define what environmentally preferable purchasing (EPP) means and promote contracted suppliers with products that maximize *safety* and *environmental sustainability*. Premier is actively assisting members in identifying available environmentally preferable contracts and promoting conversion to safer, environmentally preferred products under contract.

Premier recognizes that its members want to eliminate chemicals of concern from the supply chain. The *Chemical Footprint Project (CFP)* provides an independent assessment solution to help track and encourage the use of safer chemicals. As a CFP signatory, and through the support of our individual members, our alliance can help accelerate the adoption of safer and environmentally sustainable chemicals by industry suppliers.

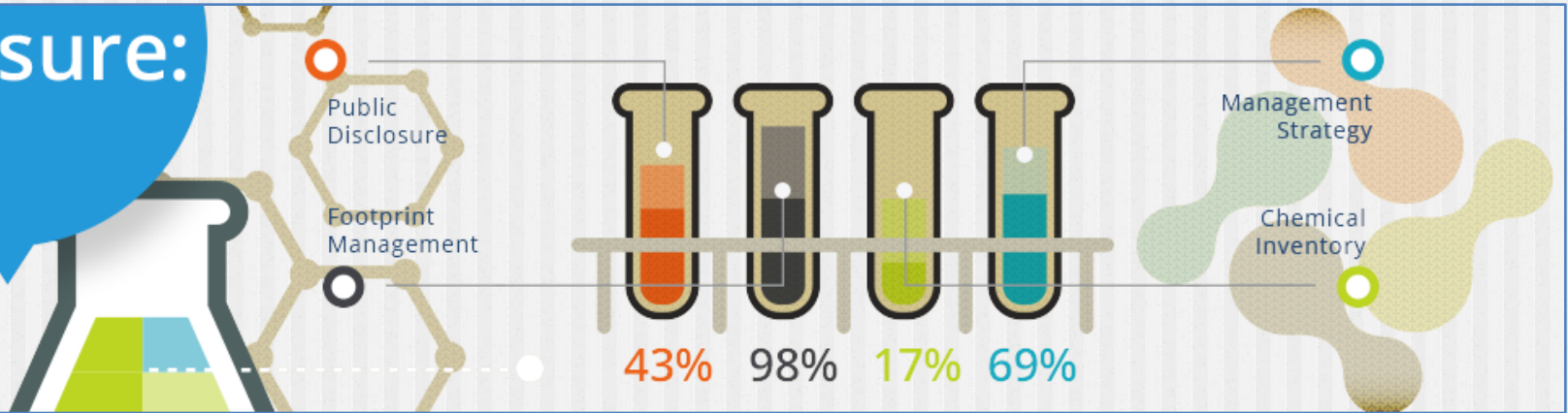


**Premier member signatories of the Chemical Footprint Project (CFP)**

*(For a complete list of CFP signatories, please visit: <https://www.chemicalfootprint.org/value/cfp-signatories>)*



# Measure:



2015 - 25 responders

## Sectors include:

- Building products/furniture
- Footwear/apparel/textiles
- Electronics
- Personal care
- Medical devices
- Hospitality
- Children's products/toys
- Cleaning products



# Timeline – 2015/16

Jun 19: online Assessment Tool launched

Nov 30: online Assessment Tool closed

Q1/Q2 2016: first CFP Annual Report

Q2 2016: Assessment Tool will re-open

Engage as a Responder

Become a Signatory

[chemicalfootprint.org](http://chemicalfootprint.org)





# Our Vision for CFP

