

# BizNGO 2021 Annual Meeting

Transparency & Justice Rising

December 6, 2021



# Thank you Sponsors!



# Virtual Meeting Overview

5 Sessions / 2 days

1. Addressing Environmental Justice Through Chemicals Management (today @ 11am-2pm EST)
2. Transparency: Disclosing Chemicals in Products & Supply Chains (today @ 3pm-6pm EST)
3. Safer Chemicals in Manufacturing (December 8 @ 11am-12:30pm EST)
4. Standards, Indexes, & Purchasers Tracking Corporate Progress to Safer Chemicals (December 8 @ 1:30pm-3pm EST)
5. Circularity & Toxics: Bringing Chemical Safety to Closed Loop Systems (December 8 @ 4pm-5:30pm EST)



# About BizNGO

BizNGO is a collaborative network of business and environmental leaders working together to promote safer chemicals and sustainable materials in consumer marketplaces to advance to a healthy economy, healthy environment, and healthy people.

Our workgroups:

1. DEI / Environmental Justice
2. Chemicals Management
3. Hazard Assessment
4. Public Policy

Join BizNGO workgroups at [www.bizngo.org/get-involved/join-bizngo](http://www.bizngo.org/get-involved/join-bizngo)



# Chatham House Rule



Participants are free to use the information received, but neither the identity nor the affiliation of the speaker(s), nor that of any other participant, may be revealed; unless approved by the participant

# Zoom Protocol

Enter participant ID if you are calling in

Raise hand if you'd like to speak

Chat for questions/comments

Rename yourself to include your organization

Mute yourself when not speaking

Feel free to show your video :)

Presentations will be recorded, breakouts/Q&A/report backs will not



# Zoom Protocol

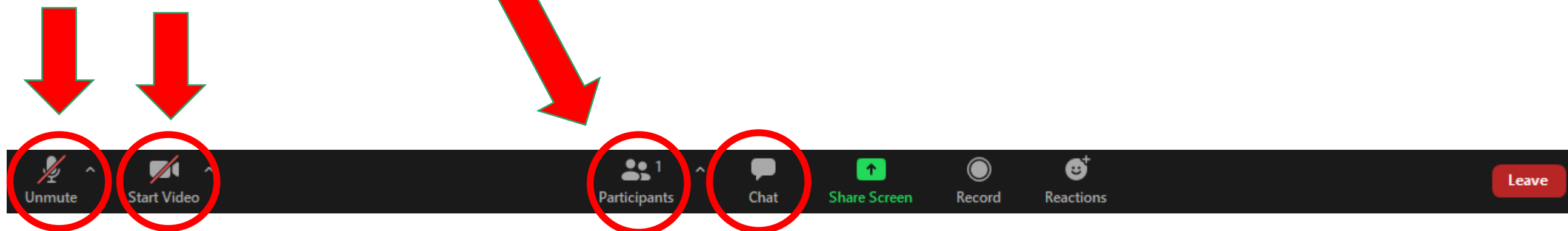
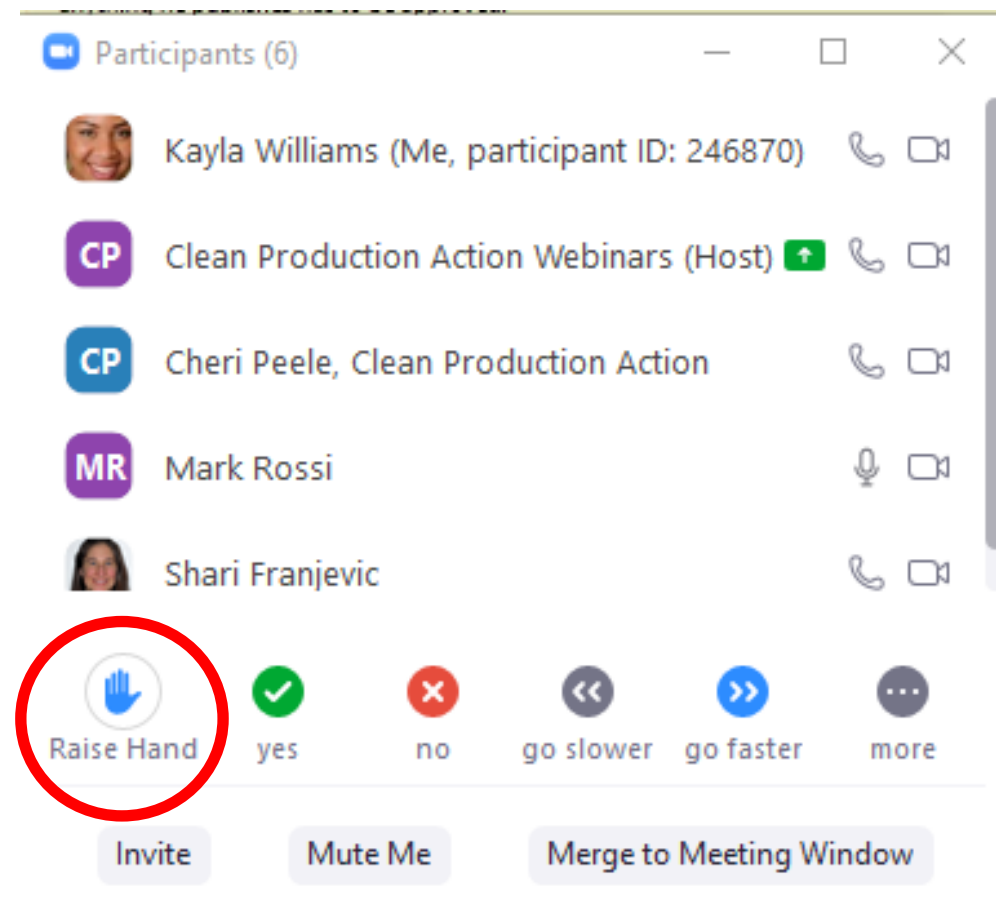
Raise hand if you'd like to speak

Chat for questions/comments

Rename yourself to include your organization

Mute yourself when not speaking

Feel free to show your video



# Session 1

## *Building a Roadmap: Addressing Environmental Justice Through Chemicals Management*



# Session 1 Desired Outcomes

- Recognized and acknowledged need to address environmental justice & DEI in BizNGO
- Learned best/better practices for advancing environmental justice & DEI in the context of chemicals
- Meaningful engaging and sharing of ideas
- Deep listening

# Speakers & Commentators

**Michele Roberts**  
National Co-Coordinator,  
Environmental Justice Health  
Alliance (EJHA)



**Astrid Williams**  
Environmental Justice Manager,  
Black Women for Wellness



**Latonya Jackson**  
Assistant Professor of Biology  
University of Cincinnati



**Pamela Miller**  
Executive Director,  
Alaska Community Action on Toxics



**Susan Baker**  
Director of Shareholder Advocacy,  
Trillium Asset Management



# Session 1 Agenda

11:05 Welcome & Introduction

11:15 Presentations

Michele Roberts

Astrid Williams

11:45 Q&A

11:55 Small group discussion

12:15 Break

12:45 Report backs

12:55 Responses / Comments

Latonya Jackson

Pamela Miller

Susan Baker

1:10 Introduce straw proposal of actions

1:20 Small group discussion

1:40 Report backs

2:00 Adjourn



# BizNGO DEI & EJ Workgroup

Met 3 times this year to continue drawing out key strategic issues and questions that arose at Session 1 of the BizNGO 2020 Annual Meeting: Confronting DEI at the intersection of business and hazardous chemicals

1. Better understanding disproportionately impacted communities and populations
2. Advancing principles and practices that support and uplift environmental justice & DEI



# No Community Left Behind



The background of the slide features a sunset sky with a warm orange and yellow glow near the horizon, transitioning to a cooler blue and purple at the top. In the foreground, the dark silhouettes of several oil pumpjacks are visible, their complex mechanical structures standing against the bright light of the setting sun. The overall mood is one of industrial activity amidst a natural, serene environment.

# Building a Roadmap: Addressing Environmental Justice

BizNGO Conference  
December 7, 2021



## Sisters in Control: Environmental Justice Program

Dr. Astrid Williams, Program Manager

Dr. Astrid  
Williams

Black Women for Wellness' Sisters in Control Environmental Justice programs works to build healthier communities by addressing issues such as the elimination of oil drilling, the exposure of toxic chemicals in our personal and hair care products and more.





# Environmental Health Impacts on Urban Communities







# How Environmental Justice Impacts Communities

## The problem

**The potential health impacts associated with living near oil and gas activities** examine a variety of short-term and long-term health indicators such as birth outcomes; cancer; and respiratory neurological, gastrointestinal, dermatological, and psychological effects. While epidemiological studies have found limited associations between adverse health effects and living near oil and gas operations, high-quality exposure data measured over long periods of time **have determined living near oil and gas activities is associated with long-term health impacts.**

# Environmental Health Impacts

**Environmental and Health Impact Assessments:** These impact assessments help to fill data gaps in the literature by predicting potential health and safety impacts from air emissions, odors, noise, vibration, and other environmental hazards associated with oil and gas development projects.

Studies suggests that emissions of VOCs from oil and gas sites may be considerably underestimated compared to emission inventories, and further study is warranted. **We recommend that there be a 2500 ft setback and advocate for total phase-out of all oil drilling operations in neighborhoods.**

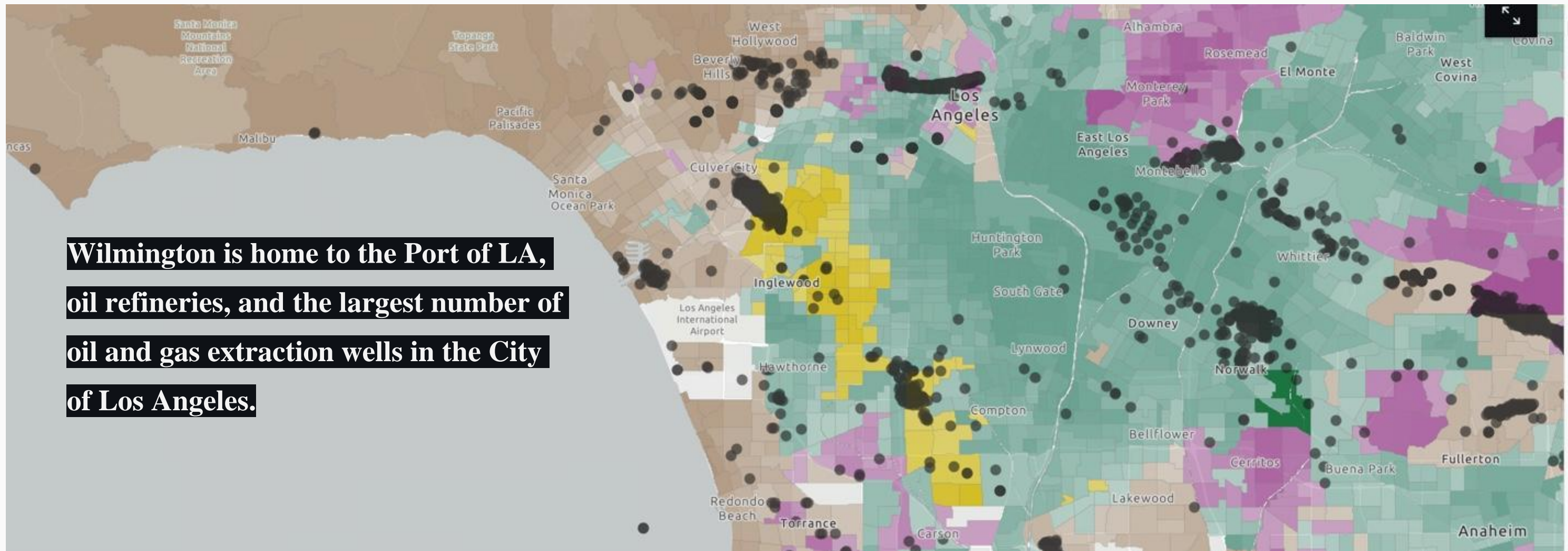
# Neighborhood Oil Drilling

**Oil and gas development in the Los Angeles Basin presents unique public health and safety concerns**, because some oil and gas reserves lie beneath densely populated urban areas. Future production from these natural reserves will primarily come from its 68 active oil fields, with some potential for the development of undiscovered oil and gas resources using conventional or unconventional methods.



# Los Angeles Basin of Oil Wells

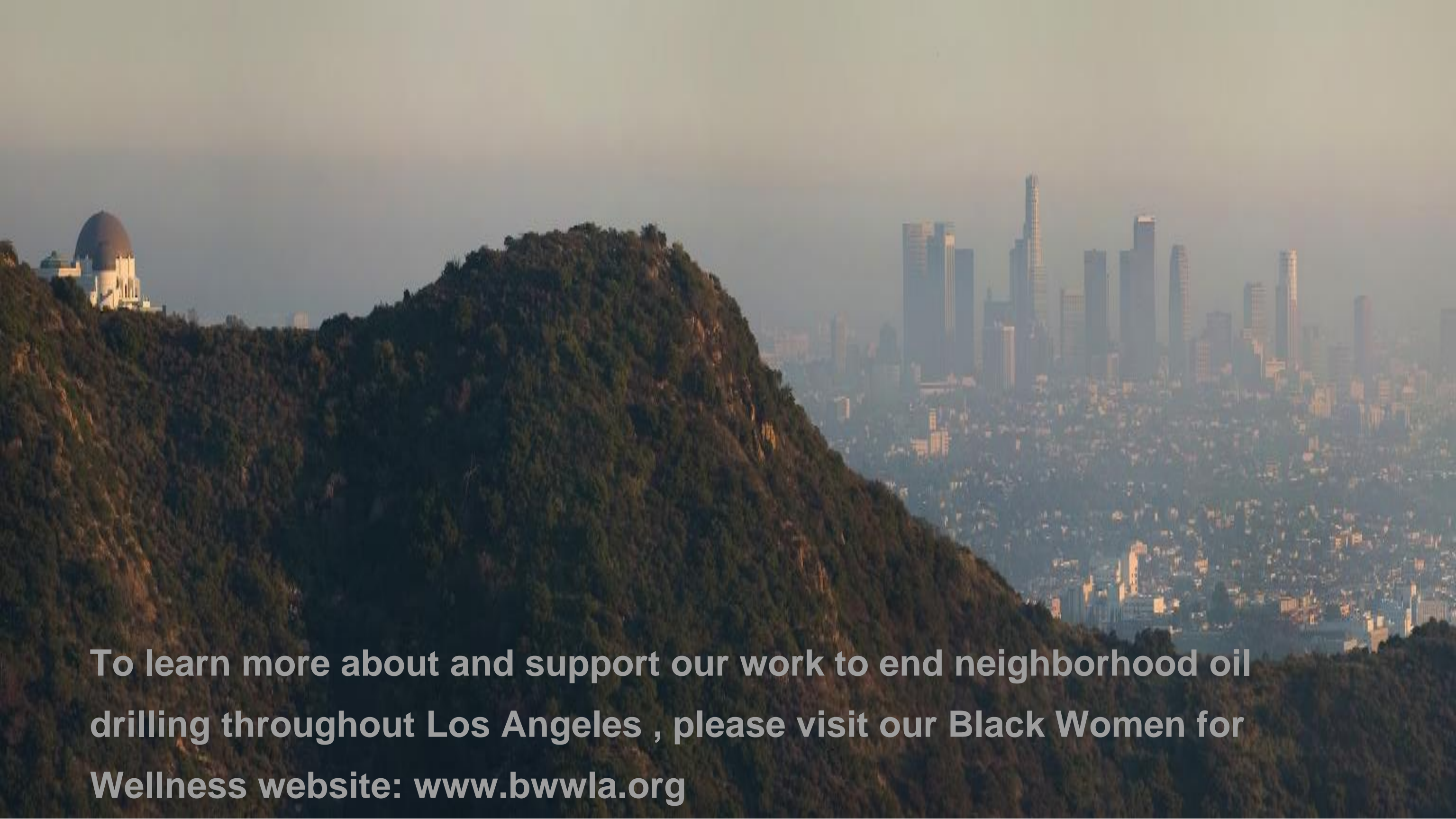
**Wilmington is home to the Port of LA,  
oil refineries, and the largest number of  
oil and gas extraction wells in the City  
of Los Angeles.**



# Environmental Justice is a Right

The undeniable fact is that history prevails racist land use and zoning decisions have resulted in the siting of harmful land uses like oil extraction in some of our most vulnerable communities, making it easy for bad-faith actors, such as big oil, to extract from and poison frontline communities. **We demand an end to such harmful practices with a citywide phaseout of oil extraction activities, we need a true just recovery and just transition that uplifts community and environmental health because environmental justice is racial justice.**





**To learn more about and support our work to end neighborhood oil drilling throughout Los Angeles , please visit our Black Women for Wellness website: [www.bwwla.org](http://www.bwwla.org)**

# 11:45 Q&A

The floor is open to ask Michele, and Astird questions or share your thoughts/reactions to their presentations.

Indicate you have something to say by typing it in chat or raising your hand.

# Small Group Discussion

All attendees will be randomly assigned a breakout room and join a small group discussion.

What are your thoughts after hearing from our presenters? What did the presentations bring up for you in the context of your work? Is there anything important that you want to highlight or share?

# 12:15 Break

See you back here at 12:45pm EST!



# Report Backs & Responses from our Commentators

What are your thoughts after hearing from our presenters? What did the presentations bring up for you in the context of your work? Is there anything important that you want to highlight or share?



## Alaska Community Action on Toxics (ACAT):

*Mission: We believe everyone has the right to clean air, clean water, and toxic-free food. Driven by a core belief in environmental justice, ACAT empowers communities to eliminate exposure to toxics through collaborative research, shared science, education, organizing, and advocacy. We are committed to protecting the health of future generations.*

Our methods include:

- Community-based and participatory scientific research
- Public education and training
- Community organizing and advocacy
- Achieving policy change at the local to international levels





## **Annie Alowa**

**we remember her knowledge and  
forewarning as a respected  
community health aide and elder**

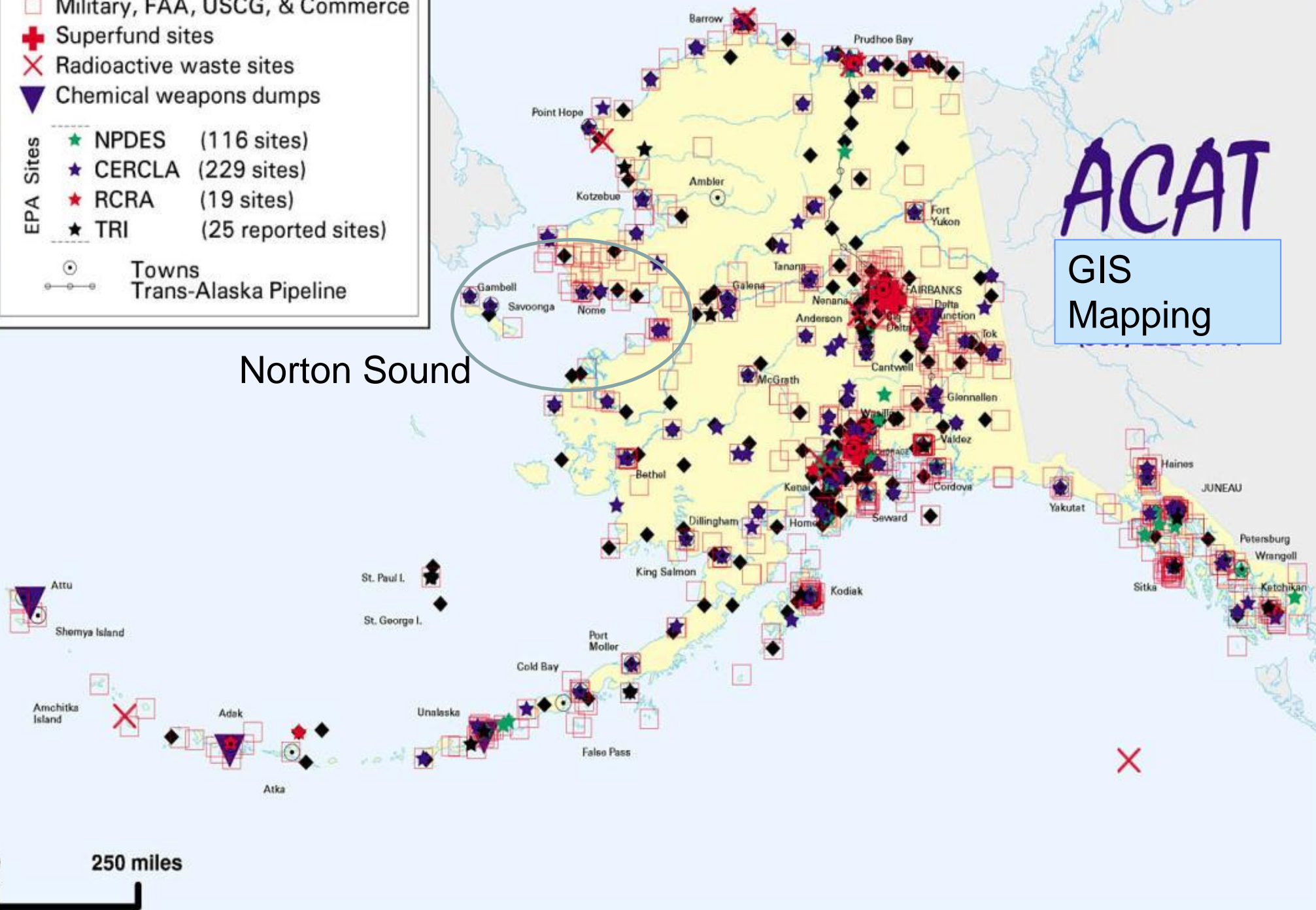
- **She was a keen and trained observer about the health of her people**
- **She observed higher rates of cancers among the people whose families lived and worked at Northeast Cape**
- **She witnessed miscarriages and low birth weight babies, especially among those families closely associated with Northeast Cape**
- **She inspires our work everyday!**



## Summary of Toxic Waste Sites in Alaska

- ◆ All ADEC contaminated sites
  - Military, FAA, USCG, & Commerce
  - ⊕ Superfund sites
  - ⊗ Radioactive waste sites
  - ▼ Chemical weapons dumps
- EPA Sites
- ★ NPDES (116 sites)
  - ★ CERCLA (229 sites)
  - ★ RCRA (19 sites)
  - ★ TRI (25 reported sites)
- Towns
- Trans-Alaska Pipeline

## 700 active and abandoned military sites in Alaska—Many co-located with Alaska Native villages



Norton Sound

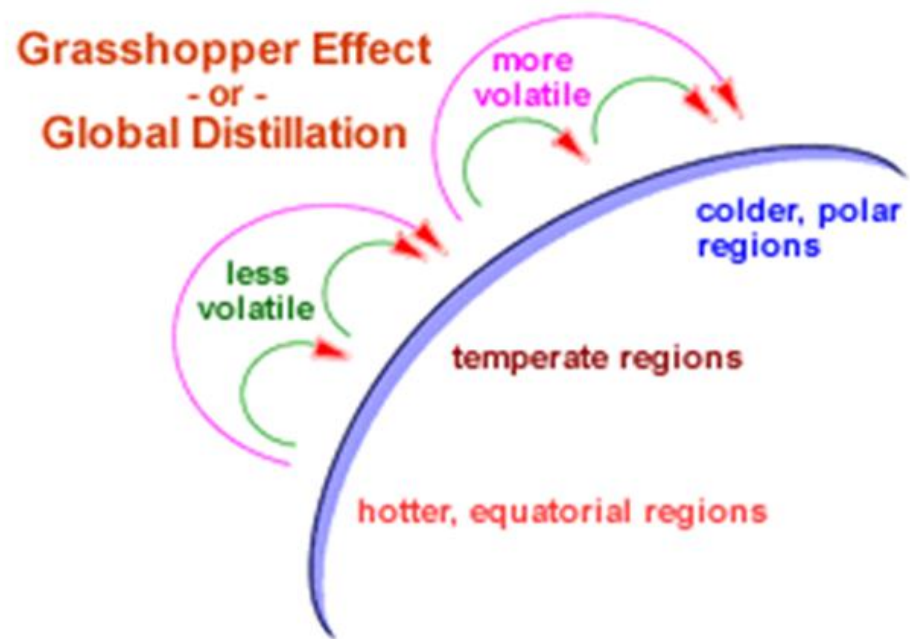
ACAT

GIS Mapping



# Global Transport of Persistent Chemicals and Climate Crisis in the North/Arctic

- The north is a hemispheric sink for persistent industrial chemicals and plastics
- Indigenous Peoples in the Circumpolar North face disproportionate exposures to toxic chemicals, and children are at highest risk
- Arctic Indigenous Peoples who rely on a traditional diet are particularly vulnerable to exposure and have levels of persistent contaminants in blood and breast milk that are among the highest of any population on Earth
- The mobilization and transport of contaminants into and within the Arctic is exacerbated by climate warming.
- The Arctic is warming three times as fast as the rest of the world. Melting of Arctic ice, glaciers, and permafrost is releasing sequestered chemicals and microplastics into our environment and food web.





# Indigenous Peoples' knowledge is at the foundation of our community-based research

*"We have always been a vigilant people. Our community-based research enables us to be vigilant at the molecular level." – Merle Apassingok, Native Village of Gambell*

*"We are overwhelmed with concern about the health harms associated with climate change, the loss of sea ice and melting permafrost and the mobilization of chemicals and plastics — these are all interconnected. We are running out of time!" – Delbert Pungowiyi, Native Village of Savoonga*

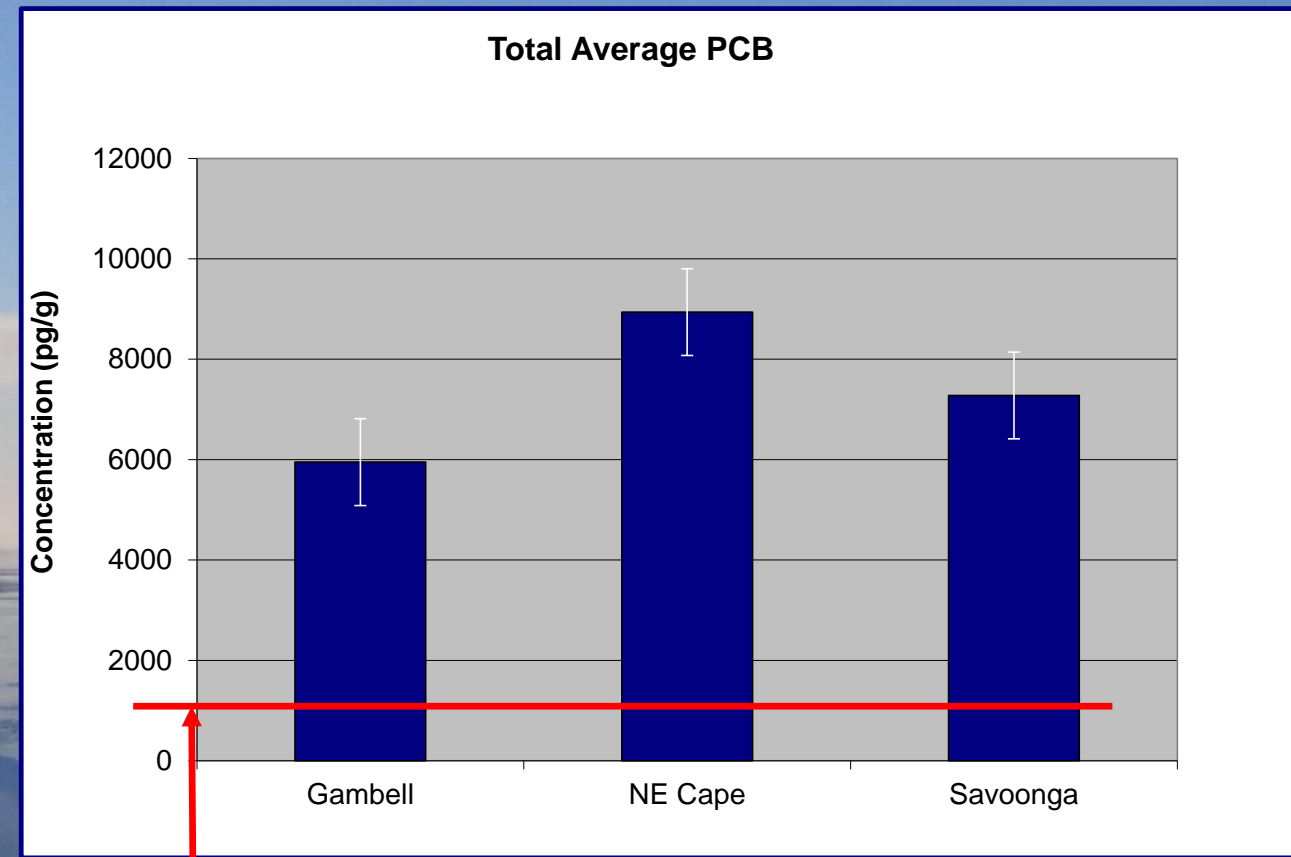
*"We don't just eat one chemical. We eat the whole fish." – Violet Yeaton, Native Village of Port Graham*





# PCBs in Blood Serum of St. Lawrence Island People

- Levels of PCBs in the blood of St. Lawrence Island Yupik people **4.5-9 times higher** than average in lower-48 populations
- Evidence of PCBs accumulating in the Arctic via global transport
- Military contamination also a significant source
  - Published in the *International Journal of Circumpolar Health*)



Average for populations in the Lower 48



## Health Harms

- **Cancers**
- **Thyroid disease**
- **Diabetes**
- **Heart disease**
- **Birth defects, low birthweight babies, premature births, stillbirths, miscarriages; and other reproductive health problems**
- **Developmental and learning disabilities**





# The Language of the Stockholm Convention

- “Aware of the health concerns...in particular **impacts upon women and children and, through them, upon future generations.**”
- “Conscious of the need for **global action...**”
- “Acknowledging that **precaution underlies the concerns of all the Parties and is embedded within this Convention...**”
- “Determined to **protect human health and the environment...**”
- “Acknowledging that the **Arctic ecosystems and Indigenous communities are particularly at risk...**”





# Working for the Protection of Present and Future Generations







*“The chemicals present in our bodies are passed onto our Indigenous children and harm their ability to learn our languages, songs, stories, and knowledge.”*





## Published papers

- Carpenter, David O. Anthony P. DeCaprio, David O. Hehir, Farooq Akhtar, Glenn Johnson, Ronald J. Scrudato, Lucy Apatiki, Jane Kava, Jesse Gologergen, Pamela K. Miller, Lorraine Eckstein. 2005. Polychlorinated Biphenyls in Serum of the Siberian Yupik People from St. Lawrence Island, Alaska. *International Journal of Circumpolar Health* 64:4.
- Welfinger-Smith, Gretchen. Judith L. Minholz, Sam Byrne, Vi Waghiyi, Jesse Gologergen, Jane Kava, Morgan Apatiki, Eddie Ungott, Pamela K. Miller, John G. Arnason, David O. Carpenter. 2011. Organochlorine and Metal Contaminants in Traditional Foods from St. Lawrence Island, Alaska. *Journal of Toxicology and Environmental Health, Part A*.74:1195-1214
- Hoover, Elizabeth. Katsi Cook, Ron Plain, Kathy Sanchez, Vi Waghiyi, Pamela Miller, Renee Dufault, Caitlin Sislin, David O. Carpenter. Indigenous Peoples of North America: Environmental Exposures and Reproductive Justice. 2012. *Environmental Health Perspectives* 120(12):1645-1649.
- Scrudato, Ronald J. J.R.Chiarenzelli, P.K. Miller, C.R. Alexander, J. Arnason, K. Zamzow, K. Zweifel, J. Kava, V. Waghiyi, D.O. Carpenter. 2012. Contaminants at Arctic formerly used defense sites. *Journal of Local and Global Health Sciences*, Vol. 2012, 2.
- Miller, Pamela K. Viola Waghiyi, Gretchen Welfinger-Smith, Samuel Carter Byrne, Jane Kava, Jesse Gologergen, Lorraine Eckstein, Ronald Scrudato, Jeff Chiarenzelli, David O. Carpenter, Samarys Seguinot-Medina. 2013. Community-based participatory research projects and policy engagement to Protect Environmental Health on St. Lawrence Island, Alaska. *International Journal of Circumpolar Health; Circumpolar Health Supplement* 72: 21656
- Byrne, Samuel. Pamela Miller, Viola Waghiyi, C. Loren Buck, Frank A. von Hippel, David O. Carpenter. 2015. Persistent Organochlorine Pesticide Exposure Related to a Formerly Used Defense Site on St. Lawrence Island, Alaska: Data from Sentinel Fish and Human Sera, *Journal of Toxicology and Environmental Health, Part A*: 78:15, 976-992.
- Byrne, S. S Seguinot-Medina, P Miller, V Waghiyi, FA von Hippel, CL Buck, DO Carpenter. 2017. Exposure to polybrominated diphenyl ethers and perfluoroalkyl substances in a remote population of Alaska Natives. *Environ Pollut* 2017 Aug 14,231(Pt 1) 387-395.
- Byrne, SC, PK Miller, S Seguinot-Medina, V. Waghiyi, CL Buck, FA von Hippel, DO Carpenter. 2017. Associations between serum polybrominated diphenyl ethers and thyroid hormones in a remote Alaska Native population. *Environmental Pollution* 231 (2017) 387-305.
- von Hippel FA, PK Miller, DO Carpenter, D Dillon, L Smayda, I Katsiadaki, T Titus, P Batzel, JH Postlethwait, CL Buck. 2018. Endocrine disruption and differential gene expression in sentinel fish on St. Lawrence Island, Alaska: health implications for indigenous residents. *Environ Pollut*. 2018 Mar;234:279-287.
- Byrne, s et al. 2018 Exposure to perfluoroalkyl substances and associations with serum thyroid hormones in a remote population of Alaska natives. *Scientific Reports* 8:2198-2207.
- Zheng, Guomao. Pamela K. Miller, Frank von Hippel, C. Loren Buck, David O. Carpenter, Amina Salamova. 2020. Legacy and emerging semi-volatile organic compounds in sentinel fish from an Arctic formerly used defense site in Alaska. *Environmental Pollution* 259: 113872.
- Byrne, et al. 2021. PFAS in traditional foods of the Yupik people of Sivuqaq. Submitted for review.

# Small Group Discussion

## Straw Proposal Actions for Addressing EJ in Corporate Chemicals Management

### Corporate level

- Chemical policy explicitly addressing EJ
- Engaged in / present in spaces where EJ and chemical issues are being addressed, eg, BizNGO
- Racial justice audit that looks back at internal/external practice with outside third-party expertise.
- Diversity of senior management including and beyond gender (i.e. race, ethnicity, sexual orientation, disabled professionals)
- Diversity of employees at all levels disproportionately held by one race and/or gender
- Committed to purposefully creating an inclusive culture
- Committed to actively holding people accountable for infractions to implement DEI initiatives.
- Endorse [Louisville Charter](#) and [Jemez Principles](#)

# Small Group Discussion

## Straw Proposal Actions for Addressing EJ in Corporate Chemicals Management

### Product level

- Prioritize RSL for reducing exposure to BIPOC communities in products
- Transparency in products: disclose chemicals in products
- Availability of products for all communities
- Marketing: level of awareness of cumulative exposure for BIPOC communities

### Manufacturing level

- Prevent Disproportionate Exposures and Hazards, and Reduce Cumulative Impacts on Environmental Justice Communities.
- Prioritize MRSL for reducing exposure to workers and fence-line communities
- Location of plants in disproportionately impacted communities

### Supply Chain

- Prioritize MRSL for reducing exposure to workers and fence-line communities





# Small Group Discussion

All attendees will be randomly assigned a breakout room and join a small group discussion.

Straw Actions for Addressing Environmental Justice in Corporate Chemicals Management

# 2:00 Adjourn

Thank you for joining! Today's presentations and slides will be made available at [www.bizngo.org](http://www.bizngo.org).

Please fill out the evaluation form for this session!

Join BizNGO workgroups at [www.bizngo.org/get-involved/join-bizngo](http://www.bizngo.org/get-involved/join-bizngo)